

2021 ANNUAL REPORT

Moving Forward

MYRTLE BEACH

REGIONAL ECONOMIC

DEVELOPMENT

MYRTLE BEACH

REGIONAL ECONOMIC DEVELOPMENT

Myrtle Beach Regional Economic Development Corporation

2050 Highway 501 East | Building 100 | Conway, South Carolina 29526

Local: 843.347.4604 | Toll Free: 1.800.844.4983 | info@mbredc.org | www.mbredc.org



South Carolina
Just right.





Working together to grow stronger.

Message from MBREDC Board Chairman & MBREDC President & CEO	5
2021 MBREDC Executive Committee & Board of Directors	6
About Us / Mission / Goals	8
Industry Spotlight	10
Target Industries	12
Fiscal Year in Review	14
Announcements & Progress	16
Company Highlights	18
Existing Industry	20
Membership & Events	22
Our Ambassadors	24
Our Municipalities	25
2021 Economic Development Partners	26
Partners In Progress	30
Our Team	31

Message from our Board Chairman and President & CEO



2021 has been a year of finding a new norm. While 2020 brought obstacles we had to deal with the best we could, now we look towards the future.

Our area has continued to thrive for our existing industry and the hospitality sector. Despite the hold on travel for companies, the Myrtle Beach Regional Economic Development Corporation continued recruiting efforts and assisting existing industries in Horry County. Wild West of Myrtle Beach, Inc., announced the purchase of a 50,000 square foot facility in Loris and the addition of 40 new jobs. Kay's Kreations purchased 2 acres in the Cool Springs Park in Aynor to construct a new facility.

In addition to the announcements, eight lots have sold in the Santee Cooper Ascott Valley Industrial Park this year. The park has very few parcels unspoken for. To continue the momentum, Horry County and the Myrtle Beach Regional EDC have agreed to purchase additional land located near Ascott Valley Park. We are excited about the future of the area, the investment in Horry County and the type of jobs that it will create to diversify our area.

Each of you who support economic development are our success. Our county, municipalities, utilities, education, healthcare, transportation, engineers, construction, bankers, IT, realtors, retail, hospitality, and more, are all needed to make our area a great place to work and live. Working together and supporting each other can make anything possible. Best of luck in 2022. We are looking forward to a record year!

Thank you,

MIKE HAGG
MBREDC Chairman

SANDY H. DAVIS
MBREDC President & CEO

2021 MBREDC Executive Committee & Board of Directors

OFFICERS

MIKE HAGG, CHAIRMAN
Horry Telephone Cooperative (HTC)

O'NEIL MCCOY, VICE CHAIRMAN
McGriff Insurance /Truist

MARILYN FORE, SECRETARY
Horry Georgetown Technical College

JIM APPLE, TREASURER
Burroughs & Chapin Company

FRED RICHARDSON, PAST CHAIRMAN
Grand Strand Water & Sewer Authority

EXECUTIVE COMMITTEE

BARBARA BLAIN-BELLAMY
City of Conway

MIKE COOL
Santee Cooper

STEVE GOSNELL
Horry County Administrator

GARY LOFTUS
Horry County Council

GREGG SMITH
City of Myrtle Beach

ROBERT WILFONG
Development Resource Group, LLC

NEYLE WILSON
Horry Georgetown
Technical College Foundation

BOARD OF DIRECTORS

ROBIN AGNEW
Bank of America

BRUCE BAILEY
Tidelands Health

MICHAEL BENSON
Coastal Carolina University

JOE BONANNO
Archetype SC

TONY COX
SC Department of Transportation
Burroughs & Chapin Company

RICK ELLIOTT
Elliott Beach Rentals

JOHNNY GARDNER
Horry County Council Chairman

NATASHA HANNA
Law Office of Natasha M. Hanna

GREG HEMBREE
SC Legislative Delegation

CHERYL KILDAY
North Myrtle Beach
Chamber of Commerce

BRYAN LENERTZ
Anderson Brothers Bank

RICK MAXEY
Horry County Schools

JEFF MCKAY
NESA

FELIX PITTS
G3 Engineering & Surveying

KAREN RIORDAN
Myrtle Beach Area
Chamber of Commerce

JUSTIN ROOF
First Citizens Bank

CARY ROWELL
Eagle Strategies

DANNY SHELLEY
Horry Electric Cooperative

SARAH SMITH
Waccamaw Regional Council
of Governments

ALICIA THOMPSON
Burr & Forman

MONICA VEHIGE
McLeod Health

VERLON WULF
Horry County Industrial
Carolina Cool

JIMMY YAHNIS
The Yahnis Company

Our Mission

To lead Horry County's efforts in attracting, growing and retaining sustainable businesses that create jobs.

Our Goals

PROVIDE OPPORTUNITIES FOR AREA GRADUATES TO STAY IN THE AREA AND FIND EMPLOYMENT.

CREATE WELL PAYING JOBS FOR HORRY COUNTY RESIDENTS.

EXPAND AND DIVERSIFY THE HORRY COUNTY ECONOMY.

GENERATE PRIVATE SECTOR BUY-IN AND SUPPORT FOR ECONOMIC DEVELOPMENT.

SUPPORT AND GROW EXISTING INDUSTRY.

STIMULATE PRIVATE SECTOR GROWTH AND INVESTMENT.

PROVIDE ADDITIONAL TAX REVENUE FOR GOVERNMENT JURISDICTIONS AND THE HORRY COUNTY BOARD OF EDUCATION.

Who We Are

The Myrtle Beach Regional Economic Development Corporation (MBREDC) was founded to function as a vital, comprehensive resource for location and expansion assistance, and to facilitate development programs throughout Horry County. We raise the profile of greater Myrtle Beach as a prime business location, unite key parties in the public and private sectors to accelerate economic growth, and diversify the economy by attracting suitable and sustainable industries.

INDUSTRY SPOTLIGHT

It may seem odd that an office furniture company is expanding its business in the middle of a pandemic that has ravaged the U.S. economy, but Joe Ferraro said Skutchi Designs had been growing “exponentially” since moving to the area.

THE COMPANY TOOK A SMALL HIT FROM THE PANDEMIC BACK IN THE BEGINNING,

Ferraro said, but bounced back quickly. That’s due in part because the company makes sneeze guards, Ferraro said, plus, companies that want or need to operate in-person have a need for higher cubicle walls to keep employees separated from each other.

Owned and operated by the wife and husband team of Jamie and Joe Ferraro, Skutchi Designs opened originally in 2005 in Long Island before moving to its current location along Gardner Lacy Road in 2012.

Skutchi, an Italian term meaning two bad boys, supplies cubicles and other office furniture to major companies and universities around the country, including Hershey’s, Pfizer, John Deere, Microsoft, and the University of Maryland. Ferraro said his skills with online marketing and advertising allowed he and his wife, Jamie Ferraro, who owns the company, to move their base of operation out of New York, where they felt the taxes on their business were too high, and to Horry County.

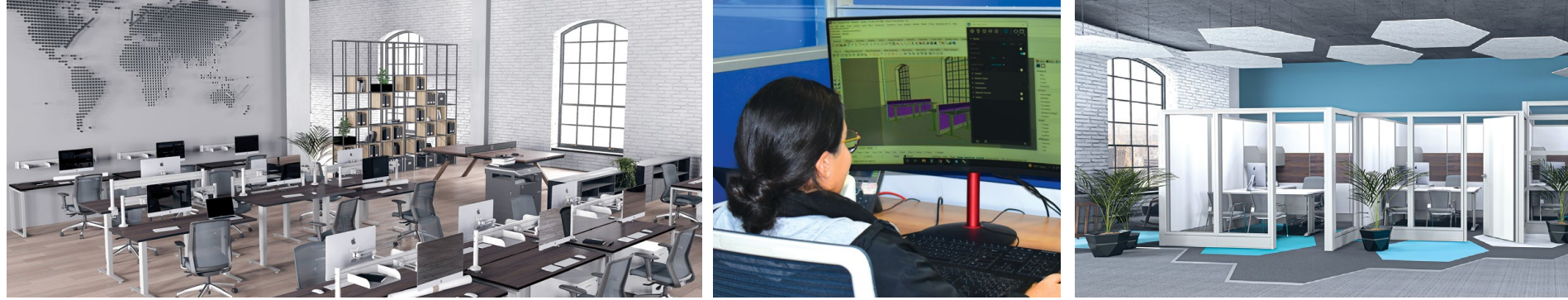
Their business had been growing for several years prior to the COVID-19 pandemic so thoughts of an expansion were already in the works. The team decided on Ascott Valley as a “fast tracked” way to expand. “Horry County has made it easy to operate our business and proven that it wants us as part of the community. We look forward to growing our company and much more success in Horry County. It is a great place to live, work and play,” says Ferraro.

“It’s huge for us because there’s a huge demand for our products,” Ferraro said, adding that the expansion was a needed step for the business. “It’s big in the sense of adding more jobs but not a big step for us because we knew this was coming. We look at it as a breath of fresh air because we need the space.”

The move will be a major expansion for the company, allowing it to more than triple the number of people it employs, from 17 currently to 58 once it hires for the 41 new jobs. Coming with a \$3.5 million investment, Skutchi Designs Vice President Joe Ferraro said, “The new facility will be a “huge warehouse” where the company will make new cubicle walls, store its wares and conduct sale operations.”

“It’s always a great day when we can celebrate the expansion of one of our South Carolina companies. Skutchi Designs, Inc.’s decision to expand its Palmetto State operations is a win for the company and for our entire state, and we look forward to seeing the positive impact these 41 new jobs will have in Horry County,” South Carolina Gov. Henry McMaster said.

Many existing industries in Horry County have been able to find a silver lining within the COVID-19 pandemic. The MBREDC is proud to support our local industries as they find ways to move forward.



TARGET INDUSTRIES



AVIATION

Strategically located in the Southeast's Aviation Corridor, Horry County is a prime location for businesses in the aerospace and aviation industry. The area offers a variety of development-ready sites well-suited for airplane and component manufacturers, Maintenance, Repair and Overhaul (MRO), and aviation technology companies. In addition to the physical assets offered, Horry County is home to the thriving campuses of the Pittsburgh Institute of Aeronautics and The Myrtle Beach Academy of Aviation, where students graduate with certifications in aviation maintenance technology.



ADVANCED MANUFACTURING

As manufacturing continues to be one of the fastest growing industries in the U.S., Horry County is quickly becoming an area for great opportunity in advanced manufacturing. Companies from around the world are taking notice to the well-trained, readily available workforce and an affordable operating environment, which makes the community an ideal location for expansion and business development. HGTC's addition of their two new Advanced Manufacturing Center's in both Horry and Georgetown County provide a steady pipeline of highly trained workers in response to the industry demands for Horry County.



TECHNOLOGY & OFFICE

The Grand Strand's state-of-the-art telecommunications infrastructure provides an excellent network foundation for connectivity to anywhere in the world. Horry County offers an excellent quality of life combined with a dynamic workforce that provides a competitive advantage in the global marketplace. Operating costs for Horry County businesses are well below the national average, including low utility rates, low personal and corporate tax structures, low insurance rates, and high productivity from skilled workers. The area offers an abundance of talent with graduates from Horry County Schools, Horry Georgetown Technical College, Miller-Motte Technical College, Webster University and Coastal Carolina University, all of which offer business administration, computer science, IT, and finance-related degrees and programs.



MARINE

The Bucksport Marine Park is a partnership among the Grand Strand Water and Sewer Authority, Santee Cooper, Horry County, and the Myrtle Beach Regional Economic Development Corporation. One of the greatest assets of this site is its direct access to the Intracoastal Waterway (ICWW). It is to be constructed on a 100-acre site adjacent to the historic Bucksport Marina located approximately thirty nautical miles from Winyah Bay and thirty nautical miles from Little River inlet. An economic impact report estimates that the Bucksport Marine Park would directly employ over 200 people with an annual economic impact of well over \$60,000,000. With easy access to the ICWW and ultimately to the entire eastern seaboard, any business needing waterway access or use will not only find a perfect location but a talented and dedicated workforce. Additionally, our workforce development and education partners are committed to assisting businesses in development training programs to meet the needs of each individual industry.



HEALTHCARE

Horry County continues to be one of the fastest growing metropolitan areas in the U.S. The population in Horry County has continued to increase with estimates now over 330,000 and a median age of 45. With this overall increase in population, the need for expanded healthcare options and services is rising. This market includes a variety of healthcare service facilities, physician's offices, medical laboratories, information management firms, and even medical device manufacturers. Healthcare-related businesses in our area work closely with local colleges and universities such as Horry Georgetown Technical College, MillerMotte Technical College and Webster University, which offers dental and nursing programs, and Coastal Carolina University, which offers Nursing, Biology, and Health Administration degrees. Also, Horry County Schools, including the Academy for the Arts, Science, and Technology and the Academy for Technology & Academics provide specific career majors like pre-medicine, nursing, and health sciences among several others. Partnering with these institutions assists in meeting the workforce needs of health-care-related businesses.

Solid foundations
for future growth.



Fiscal Year In Review

MBREDC'S SOURCE OF OPERATING INCOME

FY 2021 / 2022
(BUDGETED)

HORRY COUNTY
\$700,000

PRIVATE MEMBERSHIP
\$320,000

MUNICIPAL SUPPORT
\$67,272

IN-KIND DONATIONS
\$50,000

INTEREST EARNED
\$190

UTILIZE ASSETS FROM
FY 20/21 DUE TO COVID
\$120,000

TOTAL REVENUE \$1,257,462

MBREDC'S OPERATING EXPENSES

FY 2021 / 2022
(BUDGETED)

PERSONNEL
\$483,000

NESA OPERATIONS
& GRANT MATCH
\$200,000

RECRUITMENT
\$144,000

BUILDING &
OFFICE OPERATIONS
\$122,450

MARKETING &
MEMBERSHIP SERVICES
\$120,500

CONTRACT SERVICE
\$20,000

BUSINESS MEMBERSHIPS
& STAFF TRAINING
\$16,000

CONTINGENCY
\$15,000

EXISTING INDUSTRY SUPPORT
\$8,000

BUSINESS & TRAVEL
\$18,000

CARRYOVER FROM COVID ASSETS
\$110,512

TOTAL EXPENSES \$1,257,462



Wild West of Myrtle Beach, Inc., a boots and apparel retailer, announced plans to expand operations in Horry County. The more than \$2.5 million investment will create 40 new jobs over the next five years.

FOUNDED IN 1996, Wild West is a family-owned and operated company that retails and distributes men’s, women’s and children’s boots and accessories.

The expansion will include a 50,000-square-foot distribution center to support the company’s e-commerce division.

The jobs at the distribution center will pay a base wage plus benefits such as healthcare and a retirement savings plan. Those jobs will not require prerequisites for a person to get hired. The company will also be hiring skilled jobs to work at the distribution center, including those in digital marketing and accounting.



“The expansion of Wild West’s existing operations in Horry County signals yet another vote of confidence in the workforce and the strong business environment here in South Carolina. Congratulations to Wild West, and we look forward to your continued success.”

Secretary of Commerce Harry M. Lightsey III

Ascott Valley Industrial Park

ASCOTT VALLEY is a premier industrial park made up of over 120 acres of ready-to-build land. The property is currently zoned for HI – heavy industrial. Located within one mile of Highway 22, and a short drive to I-95, the property is equipped with water, sewer, electric, and telecommunications. Many of the lots have been sold and the infrastructure is currently being constructed. Additional land is being purchased near this industrial park in order to further the potential for the area.



Kay’s Kreations

KAY’S KREATIONS, a wholesale shell craft supplier, has purchased 2 acres in the Cool Springs Industrial Park as part of an expansion for their business which was created in 1977 in the Myrtle Beach area. Kay’s Kreations serves all areas of the United States, Bermuda, and throughout the Caribbean Islands.



City of Myrtle Beach Receives Grant

The City of Myrtle Beach received a \$100,000 grant from the South Carolina Parks, Recreation and Tourism Department to build a pedestrian and bicycle bridge over the outfall of the Thunderbolt Park Lake on Farrow Parkway. The bridge will be near the existing picnic shelter and bicycle repair station and will allow walkers and bikers to cross over to the far side of the lake's Avenger Trail. The city received a grant from SCPRT back in 2015 to build the trailhead, restrooms parking and outdoor classroom at that location.



CCU ranked No. 5 in Best Value by U.S. News & World Report

Coastal Carolina University is ranked No. 5 on the Best Value Schools (South) list released by U.S. News & World Report for 2022. The Best Value category calculation takes into account the school's academic quality and net cost of attendance. Coastal has earned high rankings in the Best Value category consistently for the past 10 years; this is the fifth consecutive year CCU has been ranked in the top six.

"Coastal Carolina University is committed to offering our students a well-rounded liberal arts education at a reasonable cost," said CCU President Michael T. Benson. "Our continual inclusion in the annual U.S. News & World Report rankings validates the hard work of all of our administration, faculty, and staff. Our goal is to ensure students have access to higher education, earn their degrees, and are prepared to become productive citizens in their communities."

Of the 58 Southern universities in the Best Value category, the No. 5 ranking places CCU ahead of other state public institutions such as The Citadel (21st), Winthrop University (43rd), and the College of Charleston (51st).

"We are so pleased by our placement in the Best Value category," said Dan Ennis, CCU's provost and

executive vice president of academic affairs. "Parents are justifiably concerned about rising tuition. Too many students are compelled to take on crippling debt in order to secure the education needed for a modern economy. Coastal has taken steps to keep tuition flat and find efficiencies, and those efforts are reflected in that ranking."

Coastal Carolina has a total enrollment of more than 10,000 students, and offers baccalaureate degrees in 95 major fields of study. Among CCU's graduate-level programs are 27 master's degrees, two educational specialist degrees, and two doctoral programs – the Ph.D. in marine science: coastal and marine systems science, and the Ph.D. in education.

Dargan Construction Honored



Dargan Construction was honored to have its Marriott Breakers Resort project featured on the cover of the American Concrete Pumping Association's Spring 2021 magazine. Dargan Construction and their partners at Concrete Materials Placement (CMP) worked diligently on the 25-story hotel in the heart of Myrtle Beach. The hotel is an estimated 200,000 square feet, has 230 guest rooms, wonderful amenities and is expected to open in the spring of 2022.

HGTC Outboard Marine Technology Program Receives Yamaha Donation

Horry-Georgetown Technical College (HGTC) Outboard Marine Technology Program received

another generous donation through its partnership with Yamaha Marine University in April

of this year. Yamaha Motor Corporation, one of HGTC's most dedicated industry partners and program sponsors, donated a F25SMHA Outboard engine to the program which starts as a brand-new Yamaha 25 motor valued at \$4,000.

"HGTC is grateful and proud of the contributions Yamaha Marine has made to our College," said Dr. Marilyn Murphy Fore, HGTC President. "Because of their persistence to assist in the success of the Outboard Marine Technology program, HGTC is providing top of the line training for students and making critical connections with local businesses. We hope our community recognizes special gifts like this bestowed upon our College."



Myrtle Beach International Airport Sets State Record

For the second consecutive month, The Myrtle Beach International Airport (MYR) set a record for passenger traffic with more than half a million total passengers in July, the highest monthly passenger count ever recorded at an airport in the history of South Carolina. Total passenger traffic, which includes both arriving and departing passengers, totaled 547,933, a 49.1% increase from 367,620



passengers in July 2019, MYR's previous best July on record.

"This is an incredible win for the Myrtle Beach International Airport," said Scott Van Moppes, Director of Airports. "Not only was MYR the busiest airport in the state for two consecutive months, MYR saw the highest passenger counts ever recorded in an airport in South Carolina. These new records are a testament to how truly great our destination is and how high demand for travel to and from Myrtle Beach has become. MYR has always been a first-class facility and more and more people are taking note, including both travelers and the airlines. The entire airport team, including airline staff and TSA have been doing an incredible job of working hard to keep the huge volumes of passengers flowing. We couldn't be prouder of everyone's hard work along with this accomplishment and we look forward to continuing to lead the charge in post-pandemic recovery in the Palmetto State."



Dr. Gerald Harmon, vice president of medical affairs at Tidelands Health, was sworn in as president

of the American Medical Association during a virtual ceremony in June of this year. Dr. Harmon is the association's 176th president but only the third physician from South Carolina to serve in that role.



During his one-year term, Dr. Harmon will be the face of the AMA and work to help the country recover from the COVID-19 pandemic, drive the future of medicine, remove obstacles to patient care and lead the charge to prevent chronic disease and confront public health crises.

"It's a wonderful opportunity to serve as AMA president during such a pivotal time for health care in our country," Dr. Harmon said. "The AMA has tremendous influence, and I'm eager to bring my perspective as a family medicine specialist, front-line hospital physician, advocate and mentor to these national discussions."

EXISTING INDUSTRY

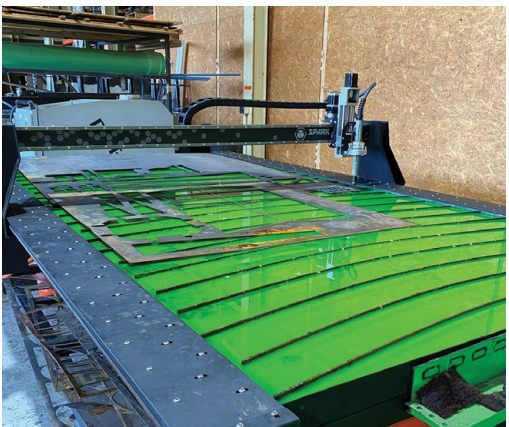
Fueling Economic Growth.

Supporting and growing Existing Industry continues to be one of the MBREDC's major goals with a vast majority of current announcements coming from local businesses within our state and county.

AS RECRUITMENT TRAVELS CONTINUED TO BE RESTRICTED DURING 2021, the MBREDC turned its efforts on identifying, locating, and visiting the existing industries operating within Horry County. We were able to visit and provide support to nearly 150 businesses within our target industries list: aviation, manufacturing, marine, technology, and healthcare. The success of these industries means the success of Horry County through jobs, increased tax revenues, stimulation of our local economy, and a better way of life for our citizens.

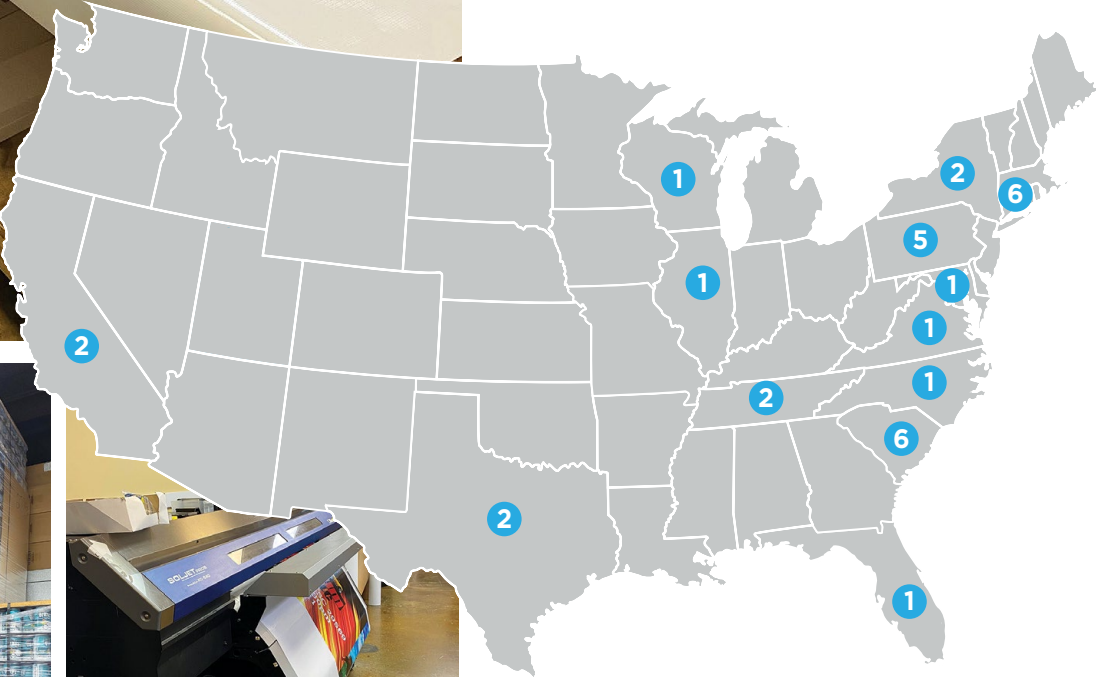
Our team works consistently to develop relationships and to serve as a liaison between our businesses and the local municipalities, utilities, and government agencies to address their concerns and needs.

The MBREDC also hosts educational and networking events, provides lists of resources, addresses work force issues, provides connections for training, and many other ways of support throughout the year. The MBREDC is available, ready, and willing to help you move forward in 2022.



MBREDC PROSPECT LEADS

California.....	2
Florida.....	1
Illinois	1
Maryland	1
New Jersey.....	6
New York	2
North Carolina	1
Pennsylvania	5
South Carolina.....	6
Texas	2
Virginia	1
Wisconsin.....	1
Ontario.....	1
Undisclosed	19



Together we're making a difference.

Each year the MBREDC holds social and educational events that are attended by members, community partners, elected officials and existing industry. These events are designed to bring the community together, to form partnerships and gain knowledge and insight on diverse topics. 2021 got off to a slow start, but the MBREDC managed to bring groups together for nine successful and well attended events in addition to 35 new members joining the organization.

Cares Act Information & Update

In keeping with COVID restrictions, the MBREDC held a webinar designed to give members up to date information about the Cares Act. Representatives from the Small Business Administration, TD Bank, and Webster Rogers guided participants in next steps concerning PPP Loans, employee retention credits, and tax incentives.

M2M Networking Event

Sponsored by Eagle Strategies, LLC in April, the MBREDC hosted this popular event at Horry Georgetown Technical College. In order to be COVID conscience, the event was divided into a morning and afternoon session. It was so successful that a second event was held in August at the Dunes Golf & Beach Club and sponsored by TD Bank. Members were able to network one on one in a structured and timed environment while making valuable connections. It is the organization's most requested event.

Industry Meet & Greet

Each year the MBREDC hosts an event designed exclusively for our existing industries. It is an opportunity for these leaders to network among themselves and share successes and solutions to similar problems in their respective fields. Thank you to Shade & Shutter Expo and Carolina Powder Coating for hosting this event and giving tours of their facilities.

Spring Social

This year's Spring Social was hosted by Carolina Cool at the Myrtle Beach Pelican Baseball Stadium. This event is always a fun night for members and their families to enjoy an evening of networking and baseball.

Health Resources for Business

Healthcare is at the forefront of everyone's mind which led the MBREDC to partner with Ulitza Kronemeyer, representative for New York Life, to hold a discussion about available resources for employers from area hospitals. Thank you to Conway Medical Center, McLeod Health, and Tidelands Health for providing valuable information about their current programs.

Community Update Forum

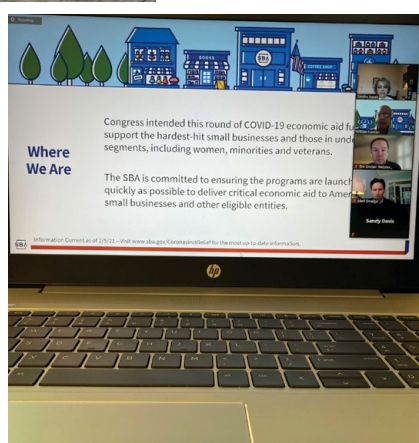
In September, the MBREDC joined with the Coastal Carolina Association of Realtors to host the 9th Annual Community Update Forum. Members heard updates from area chambers, SC Department of Commerce, SC Department of Transportation, area municipalities, and various elected officials and government agencies about the future of Horry County. This well attended and informative event is one to look forward to each year.

Fall Social

MBREDC was excited to host the annual Fall Social in October at the House of Blues in North Myrtle Beach and sponsored by Carolina Cool and Mashburn Construction. This well attended event included great food, live music, giveaways, networking, and perfect weather.

Education and Workforce Panel Discussion

Needing a skilled workforce in order for Horry County to attract and grow new and existing industries is what prompted this engaging event held in November. The discussion was focused on the skills that are needed by today's employers. Guests heard from the experts in education and workforce on what is being done now to prepare for the future of Horry County. Bank of America, Coastal Carolina University, McLeod Health, Tidelands Health, and the SC Department of Commerce made this event possible.



OUR AMBASSADORS

2021 MBREDC Ambassadors

The MBREDC Membership Ambassador program helps establish better communication between the MBREDC and its members, along with keeping members up-to-date on opportunities, benefits, and events. Ambassadors reach out to members via phone, visits, and emails in an effort to encourage member engagement, to assist the MBREDC with member relations, and to help our investors optimize their membership benefits. Our ambassadors are volunteer business and professional men and women that are in good standing with the MBREDC. The objectives of this initiative is to form lasting relationships between MBREDC members, to spread the word in the community about area businesses, and to encourage all members to get involved with the MBREDC by attending networking events, sharing their business news, and being informed on our overall mission. We thank all of our MBREDC Ambassadors who have served in this very valuable capacity over the past year.



JENNIFER WALTERS
CHAIRPERSON
Little River Chamber
of Commerce



RUSTY GASKINS
Waccamaw Regional
Council of Governments



LAURA HELMSKI
SGA / NarmourWright
Design



LESLIE MOLONEY
DBC Radio



TRACEY MITCHEM
Coastal Office Solutions



LAUREN MAZURKIEWICZ
Alpha Mortgage



TONY TROIANI
Carolina Cool



Thank you to all of our municipalities for your continued support and commitment to economic development in Horry County.



OUR MEMBERS

Thank you to all of our elected officials and partners for your continued support and commitment to economic development in Horry County.

CHAIRMAN'S PARTNERS


City of Myrtle Beach
City of North Myrtle Beach
Grand Strand Water & Sewer Authority
Horry County Government
Horry Electric Cooperative, Inc.
Horry Telephone Cooperative, Inc.
Myrtle Beach Area Chamber of Commerce
Santee Cooper
Tidelands Health

PRESIDENT'S PARTNERS

The Brandon Agency
Burr & Forman
Burroughs & Chapin Company
City of Conway
Coastal Carolinas
Association of Realtors, Inc.
The Jackson Companies
Pinnacle Financial Partners
The Yahnis Company

LEADERSHIP PARTNERS

A.O. Hardee & Son, Inc.
The Bellamy Law Firm
City of Loris
CRG Companies, Inc.
Dominion Energy
Ebtron, Inc.
Elliott Realty
First Reliance Bank
Miller-Motte College
Shade & Shutter Expo
Smith Sapp
Surteco
Synovus Bank
TRUIST
Vines Plumbing & Restoration



HORRY COUNTY
Originally part of colonial Craven County, Horry County has also been part of Prince George Winyah (1722), Prince Frederick (1734), and All Saints (1767) parishes, which served as early religious and civic jurisdictions. This area, which became part of newly-formed Georgetown District in 1769, was given its present boundaries and named Kingston County in 1785. In 1801, it was renamed Horry District, and, in 1868, Horry County.

ERECTED BY
HORRY COUNTY HISTORICAL SOCIETY
1987

EXECUTIVE PARTNERS

A Father's Place
A&I Fire and Water Restoration
Anchor Storage, LLC
Anderson Brothers Bank
Archetype SC
Bank of America
Banton Media
Benjamin's Bakery
Beverly Homes
Capitol Materials Coastal, Inc.
Carolina Cool
Carolina Food Service
CCU - Grant Center for Real Estate & ED
Century 21 Boling & Associates, Inc.
Coastal Carolina National Bank
Coastal Carolina University
Conway Medical Center
CRP Industries
Dargan Construction Company
DBC Radio
DDC Engineers, Inc.
Destination North Myrtle Beach
Development Resource Group, LLC
Diamond Shores
Duke Energy
Eagle Strategies, LLC
First Citizens Bank
Founders Centre I, LLC
G3 Engineering & Surveying
Ground Zero
Haynsworth Sinkler Boyd
Horry Georgetown Technical College

Innovative Business Solutions
Integra Fabrics
J&K Home Furnishings
Landmax - J.P. Jordan & Associates
Laudisi Enterprises
The Law Office of Natasha M. Hanna
Lazarus Entertainment Group
Lewis Truck Lines
Leonard, Grigg & Associates, LLC
LS3P
Marlboro Development Team
Mashburn Construction Company
McLeod Health
Metglas
Myrtle Air Services, Inc.
Nexsen Pruet
Palmetto Business Strategies, LLC
Pee Dee Office Solutions
Peoples Underwriters
Pittsburgh Institute of Aeronautics
REMAX Southern Shores
Revolution Mortgage
RJ Corman
S&ME, Inc.
SGA | NarmourWright Design
South Atlantic Bank
South State Bank
Southern Asphalt
Star Life Safety, Inc.
Sunbelt Rentals
Tanger Outlets
TD Bank
Tech Services Heating & Cooling

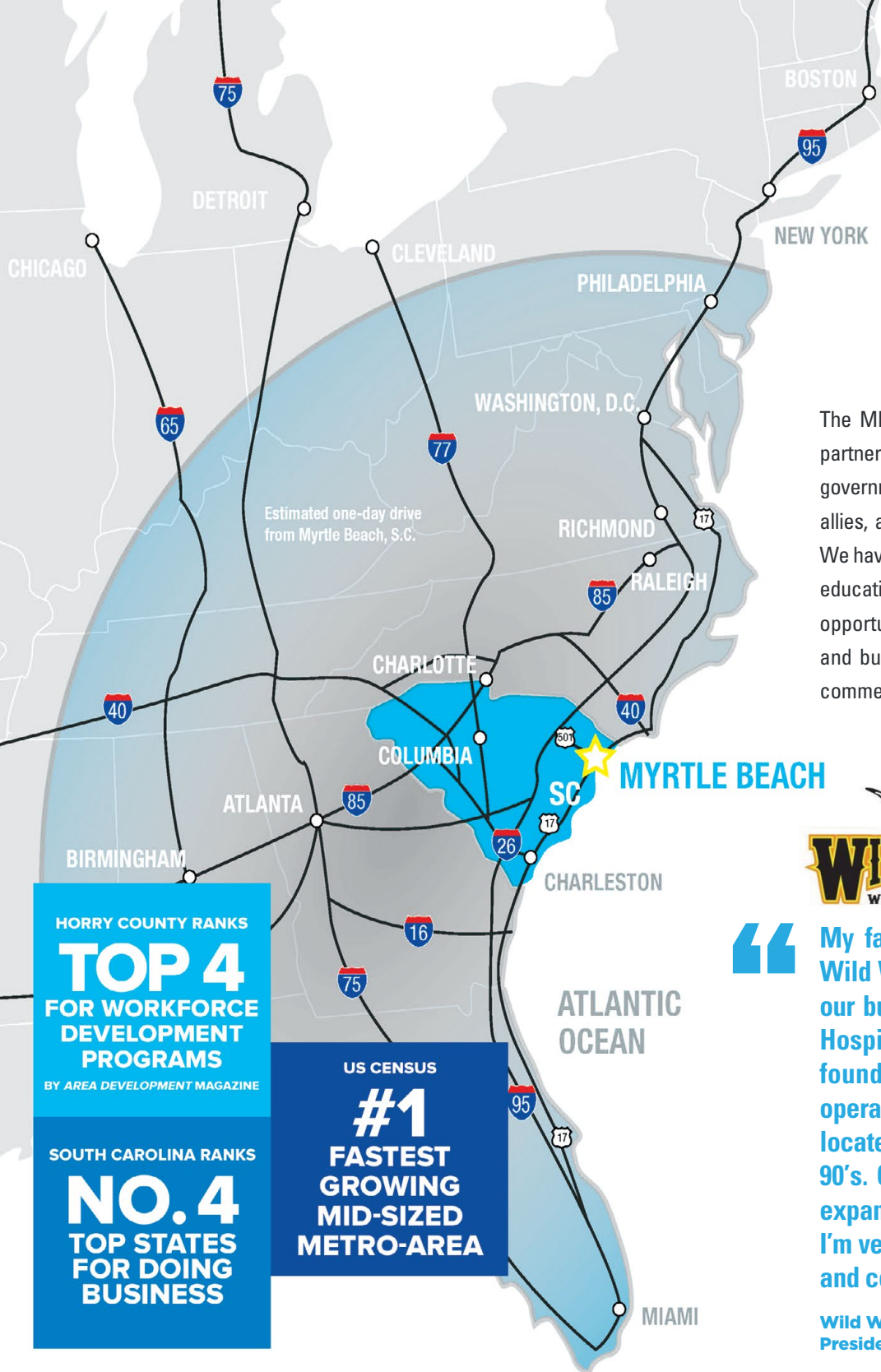
Teknoware, Inc.
Thomas & Hutton
Thomas Edward Advisors
Town of Surfside Beach
Tradd Commercial
Tyson Sign Company
United Community Bank
Vulcan Materials Company - MidEast Division
Waccamaw Community Foundation
Waccamaw Land & Timber
Waccamaw Regional
Council of Governments
WBTW
Webster Rogers, LLP
Window World of Myrtle Beach, Inc.

SUPPORTING PARTNERS

5th T Innovation
A Summer Home
Airgas
Alpha Mortgage Advantage
Avison Young
BEC Construction
BELFOR Property Restoration
Best Western Plus Myrtle Beach
Better Business Bureau
bFIVE40, LLC
Bradham Insurance Agency
Broadway Ventures, LLC
C.L. Benton & Sons, Inc.
Callie Wise for State Farm
Cancer Heroes of the Carolinas
Carlisle Associates, Inc.
Carolina Pavement Markings, Inc.
Circa Real Estate
Coastal Asphalt
Coastal Office Solutions, LLC
Coastal PC Support
Coldwell Banker Sea Coast Advantage
Control Solutions Group, Inc.
Conway Chamber of Commerce
Conway National Bank
Cool Ideas Marketing
Creative Outdoor Solutions
Duplicates INK
Edward Jones Financial Advisor -
Tammy Hardee
Eggs Up Grill Conway @ University Shoppes
Environmental Systems Testing Services, LLC
FBI Construction
Fairfield Inn North
FASTSIGNS of Myrtle Beach
Flooring Plus
Guild Mortgage
Habitat for Humanity of Horry County
Hampton Inn Broadway at the Beach
Harper General Contractors
Heather M. Cannon - Attorney at Law
Herald Office Solutions
Hilton Garden Inn -
Myrtle Beach/Coastal Grand
Homewood Metalworks, Inc.
Homewood Suites Coastal Grand Mall
Horry Georgetown Home Builders Association
House of Blues Myrtle Beach

HUB International Southeast
Hussey Gay Bell
iHeart Media
Info Quest
Lemon or Lime
Liberty Tax Service
Little River Chamber of Commerce
Long Bay Symphony
Loris Chamber of Commerce
M.F. Scratch
Mancill, Inc.
Mary K Bittle - State Farm
McAngus Goudelock & Courie, LLC
Melton Electric
Melton Power Systems
Milano Kitchen & Bath Center
Monarch Roofing
Monarch Solar
Mosby Carolina Forest
NanoAir Solutions
Nelson Mullins Riley & Scarborough
New York Life Insurance -
Ulitza Kronemeyer
PC Matic
The Printing Port
Proforma
PuroClean of Myrtle Beach, Inc.
RCH Benefits Advisors, LLC
Realty One Group Dockside -
Filomena Thompson
Richardson Custom Builders
Riverside Foam Solutions, LLC

Ross Innovative Employment
Solutions Corp.
Sandhills Bank
Sansbury Butler Properties, LLC
SAU Insurance - Ashley Sullivan
SC Power Team
Sellers General Construction, LLC
Skutchi Designs, Inc.
Smash My Trash - Myrtle Beach
SMH Building
South Bay Inn & Suites
Spann Roofing & Sheet Metal, Inc.
StarTek
Stunning & Brilliant Events
Sure Trac, Inc.
Talotta Contract Interiors
TeamLogic IT - Myrtle Beach
Thomas Concrete
THS Constructors
Town of Aynor
Tropical Smoothies Café 02, Inc.
VSC Fire & Security, Inc.
Well Care Health
Wild West of Myrtle Beach, Inc.
Wildblue Creative
WMBF
Woodyard Insurance
Worksmen Cycles
WPDE
WWMB



Partners In Progress 2021

The MBREDC, and the greater Horry County community, is a partnership of dedicated supporters. Our partnership includes governmental agencies, utility providers, economic development allies, and many private businesses that invest in our mission. We have a modern infrastructure, a skilled workforce, and higher education institutions that will provide your business with every opportunity to thrive. Our county offers a diverse mix of sites and buildings, from Class A industrial parks to business and commerce centers, for your prime business location.



“My family and I are extremely excited to bring Wild West to the Loris area and continue to grow our business in Horry County. I was born in Loris Hospital and raised in Tabor City, NC. Before founding Wild West, my parents owned and operated Worley’s Clothing, retail clothing stores located in Tabor City and Loris through the 80’s and 90’s. Choosing the Loris Commerce Park for our expansion feels like things have come full circle. I’m very grateful for the opportunity to come home and contribute to this great community.

Wild West of Myrtle Beach Inc.,
President- Austin Worley

OUR TEAM



Sandy Davis
PRESIDENT & CEO

Sandy Davis is an Horry County native and a graduate from Coastal Carolina University. After earning her Bachelor of Arts in Interdisciplinary Studies in 2004, she entered the workforce with Horry Telephone Cooperative. Prior to working for the MBREDC, Mrs. Davis worked as a controller with a local railroad. In her position as President & CEO, she is responsible for operations, human resources, project management, recruitment, existing industry development, growing the organization’s private sector membership, and providing support to the MBREDC.

sdavis@mbredc.org
843.347.4605



Lacey Gasque
OPERATIONS & ADMINISTRATIVE SUPPORT

Lacey Gasque is an Horry County native where she received an Associates in Science Degree from Horry Georgetown Technical College in 2016, and a Bachelor of Science in Business Administration Degree from Coastal Carolina University in 2017. While earning her degrees, she interned with the MBREDC for three years and handles administrative duties and accounting.

lgasque@mbredc.org
843.347.4604



Sandra James
DIRECTOR OF INVESTOR RELATIONS

Sandra James is an Horry County native and a graduate of Coastal Carolina University. She earned her Master’s of Education from the University of South Carolina and taught in Horry County Schools for over 30 years. Sandra worked at the elementary, middle, and high school levels during her career. Her experiences provided the perfect segway into joining the MBREDC team in which job creation and training are the top priorities. Sandra is responsible for promoting memberships, planning events, managing marketing, and providing support to existing industry.

sjames@mbredc.org
843.347.4604



Carl Schumpert
PROJECT MANAGER

Carl Schumpert received a Bachelor of Science degree from the College of Charleston in Hospitality & Tourism Management and later went on to earn his MBA from Clemson University. Before joining the team at MBREDC, Carl served as the Economic Development Planner for Northampton County, North Carolina. His duties at the MBREDC include supporting existing industries, assisting in recruiting and retaining companies that are MBREDC target industries, and managing projects. Carl is originally from Saluda, South Carolina.

cschumpert@mbredc.org
843.347.4604